

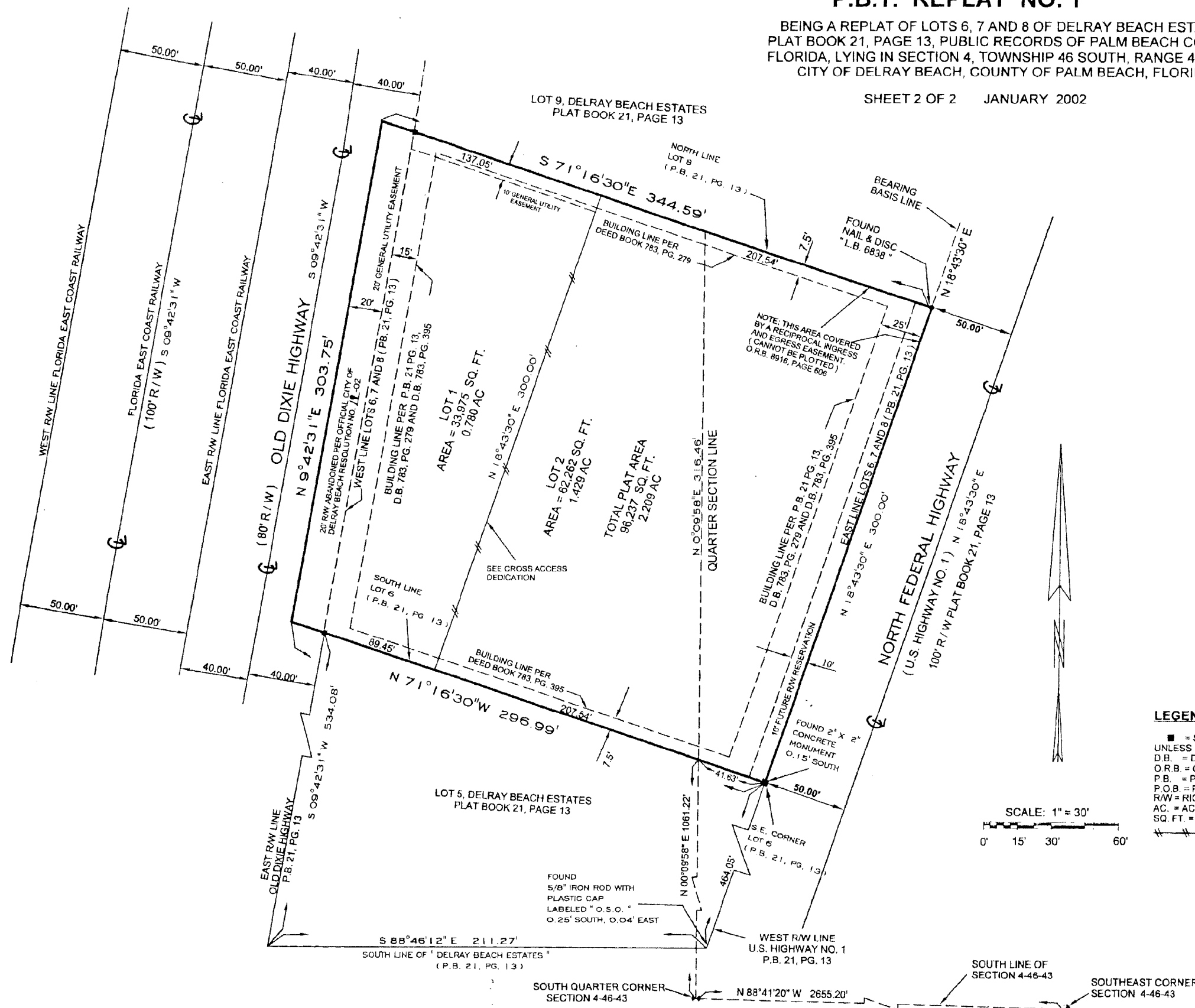
P.B.T. REPLAT NO. 1

BEING A REPLAT OF LOTS 6, 7 AND 8 OF DELRAY BEACH ESTATES, PLAT BOOK 21, PAGE 13, PUBLIC RECORDS OF PALM BEACH COUNTY, FLORIDA, LYING IN SECTION 4, TOWNSHIP 46 SOUTH, RANGE 43 EAST, CITY OF DELRAY BEACH, COUNTY OF PALM BEACH, FLORIDA.

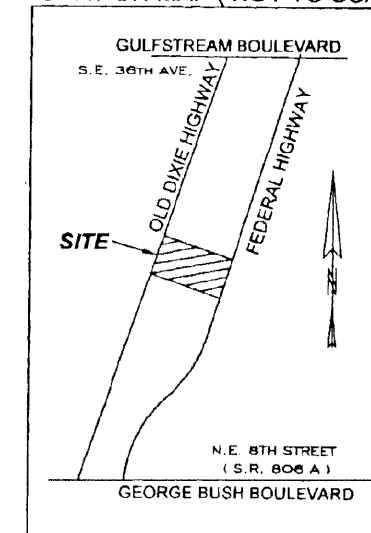
SHEET 2 OF 2 JANUARY 2002

STATE OF FLORIDA
COUNTY OF PALM BEACH
THIS PLAT WAS FILED FOR
RECORD AT
THIS _____ DAY OF _____
A.D. 2002 AND DULY
RECORDED IN PLAT BOOK
_____ AT PAGE _____

DOROTHY H. WILKEN, CLERK
BY _____, D.C.

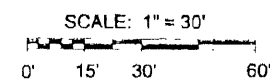


LOCATION MAP (NOT TO SCALE)



LEGEND

- = SET PERMANENT REFERENCE MONUMENT "L.B. # 6838" UNLESS OTHERWISE SHOWN.
- D.B. = DEED BOOK
- O.R.B. = OFFICIAL RECORD BOOK
- P.B. = PLAT BOOK
- P.O.B. = POINT OF BEGINNING
- R/W = RIGHT-OF-WAY
- AC. = ACREAGE
- SQ. FT. = SQUARE FEET
- = CROSS ACCESS DEDICATION LINE



MILLER LAND SURVEYING
1121 LAKE AVENUE
LAKE WORTH, FLORIDA 33460
561-586-2669

REFERENCES	L1195 X-495
JOB NO.	99-01915-A
DRAWING NO.	L-1454-P